

Installation (various methods):

Select the **CORRECT** version (7.0, 8.0 or 8.1) of the PhoneBAK Mobilephone program to install into your mobilephone:

Select Symbian OS version 7.0, if your mobilephone is:

- Nokia 3230
- Nokia 6260
- Nokia 6600
- Nokia 6620
- Nokia 6670
- Nokia 7610
- Panasonic X700
- Panasonic X800
- Samsung SGH-D710
- Samsung SGH-D720
- Samsung SGH-D730

Select Symbian OS version 8.0, if your mobilephone is:

- Nokia 6630
- Nokia 6680
- Nokia 6681
- Nokia 6682
- Lenovo P930

Select Symbian OS version 8.1, if your mobilephone is:

- Nokia N70
- Nokia N70 (Music Edition)
- Nokia N90
- SAMSUNG SGH-Z600

Select Symbian OS version 9.0, if your mobilephone is:

- | | | | |
|------------------|-------------|------------------------|--------------------|
| • Nokia E50 | • Nokia N73 | • Nokia N92 | • Nokia 6120 |
| • Nokia E60 | • Nokia N75 | • Nokia N93/93i | • Nokia 6290 |
| • Nokia E61/E61i | • Nokia N76 | • Nokia N95 | • Samsung SGH-i400 |
| • Nokia E62 | • Nokia N77 | • Nokia 3250 | • Samsung SGH-i520 |
| • Nokia E65 | • Nokia N80 | • Nokia 5500 Sport | • LG KS10 JoY |
| • Nokia E70 | • Nokia N90 | • Nokia 5700 | |
| • Nokia N71 | • Nokia N91 | • Nokia 6110 Navigator | |

- Copy the file '**PhoneBAK-Mobilephone.SIS**' via synchronization (between PC to your mobilephone), or
- Copy the file to an external storage card (SD, MMC cards) and install directly, or
- Send via Bluetooth (will receive as a SMS)
- Select the file to install

Settings

When the application is set to 'Enabled', each time the mobilephone boots up, the application will check the SIM card information.

If the SIM card is unauthorized, 02 messages will be sent out. 1 to the local number and the other to the oversea number specified.

The message will include the current SIM card information (IMSI), the model number (IMEI) and location code.

Upon starting up the application, it will prompt for a password. If the password is wrong, the application will sent out the 2 messages again. Else if password is correct, you will be able to proceed with the settings configuration.

Password - 1234 (Enter the default number 1234)

Authorize password for the application. ***Please remember to change the default password upon entering the application and save it before exit.***

Status - Enabled / Disabled

Set if the application is enabled or disabled.

Send To 1 - local number. e.g., 91234567

Send To 2 - overseas number. e.g., 6591234567

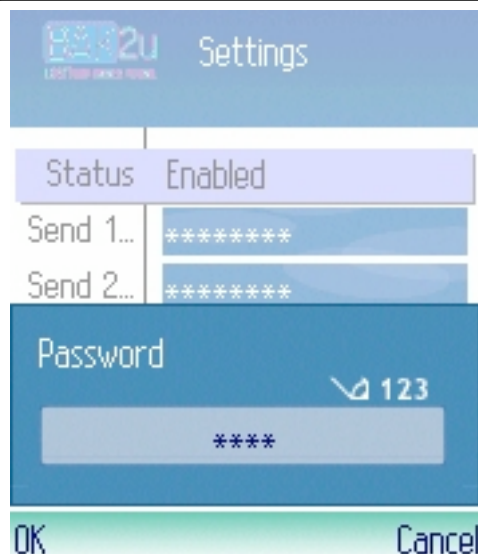
(Please note for the 2 numbers, it's in '*' format. This is to protect the recipient identity. You will be able to see the actual number when saving. For the 2nd number, please omit the '+' as it will automatically be appended by the system.)

Message - The custom message that will be sent. It will include the IMSI, IMEI number and location code.

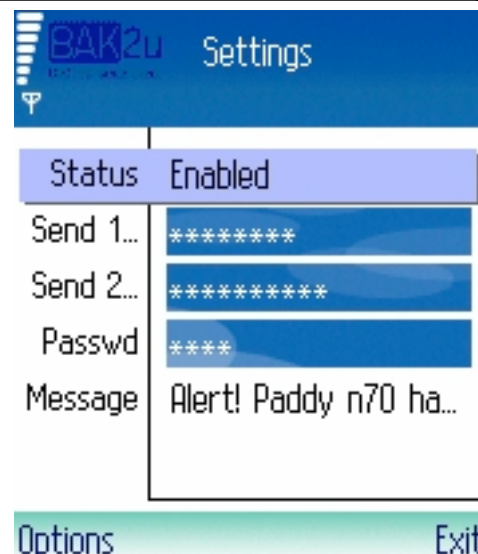
Configuration - To edit, scroll to the desired field and press the 'centre' button. After editing, you can move away from the field or click on the 'centre' button again.

To save, press the left softkey / save option. You will be able to see the numbers that are saved.

Screenshots



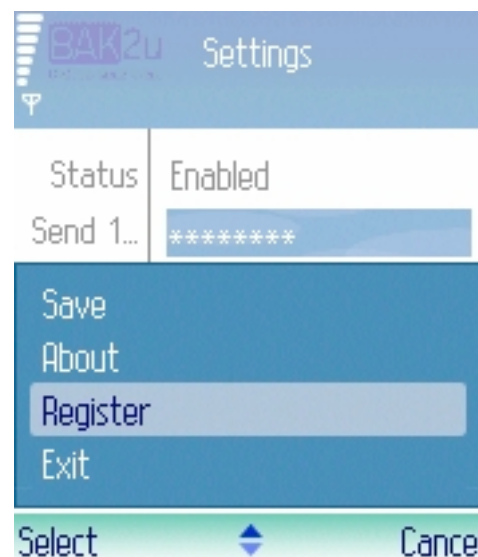
<
Enter the default password
1234 to enter the program.



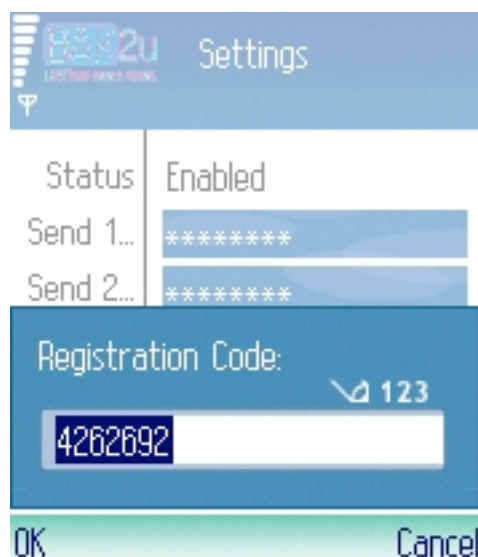
>
By default, the 'Status' is
'Enabled'.



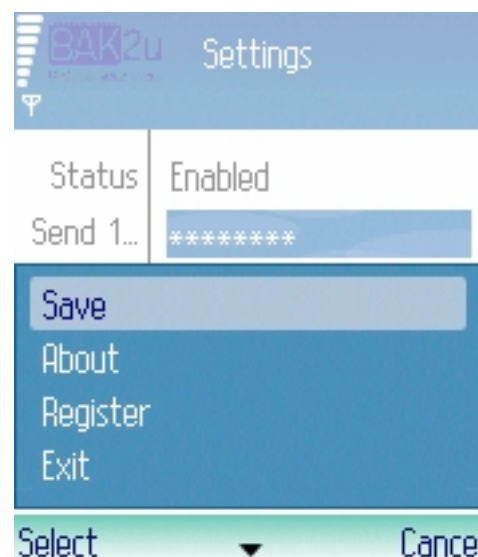
<
For 'Send 2', enter the
country/area code.
E.g. 6591234567
Do not have to include '+'
as it will automatically be
appended by the system.



>
To register, see
'PhoneBAK-How To
Register.pdf' document.



<
Enter the unlock key
generated from BAK2u
website, into the
PhoneBAK program.
Press 'Soft Key (Options) /
Register'.



>
Press 'Save' to store all
settings.